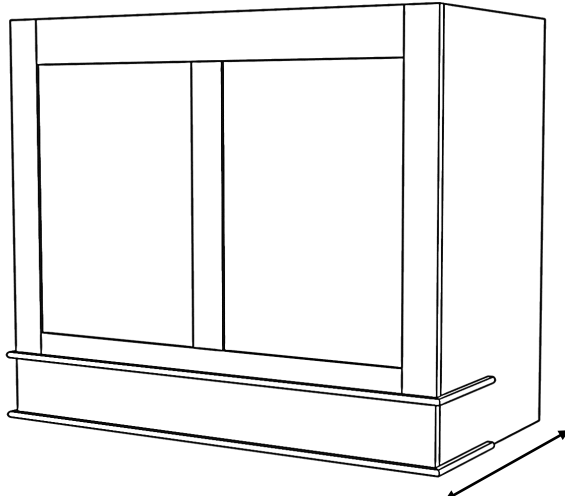


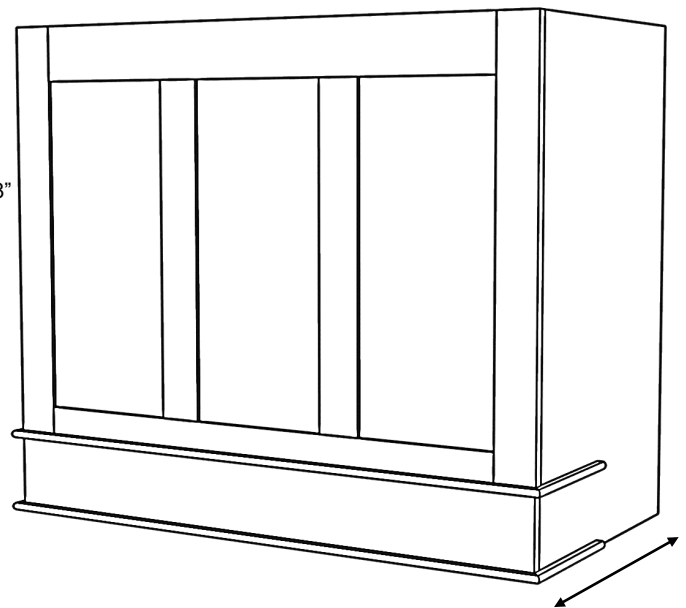
NEW

AVAILABLE FALL 2024



Overall Depth is 22-7/8"

*SB100 Series hood (SB100)
(30" – 42" wide will have 2 center panels)*



Overall Depth is 22-7/8"

*SB100 Series hood (SB100)
(48" – 60" wide will have 3 center panels)*

SB100 Series

Standard Widths	30, 36, 42, 48, 54, 60 (Reduced widths available)
Standard Heights	24, 30, 36, 42, 48 (Reduced heights available)
Removable Options	Removable Panel – standard (MRP) 2" fixed top rail available by request (MRP-2TR) – see modifications section.
Standard Assumptions	Moldings will be shipped loose, cut and sized to full depth of hood, and field trimmed to size.
Ventilation	Hood will be same width as available vent width. Example: To use a 36" vent model, the hood should be a minimum of 36" wide.
Grain Direction	Vertical (Base is horizontal)

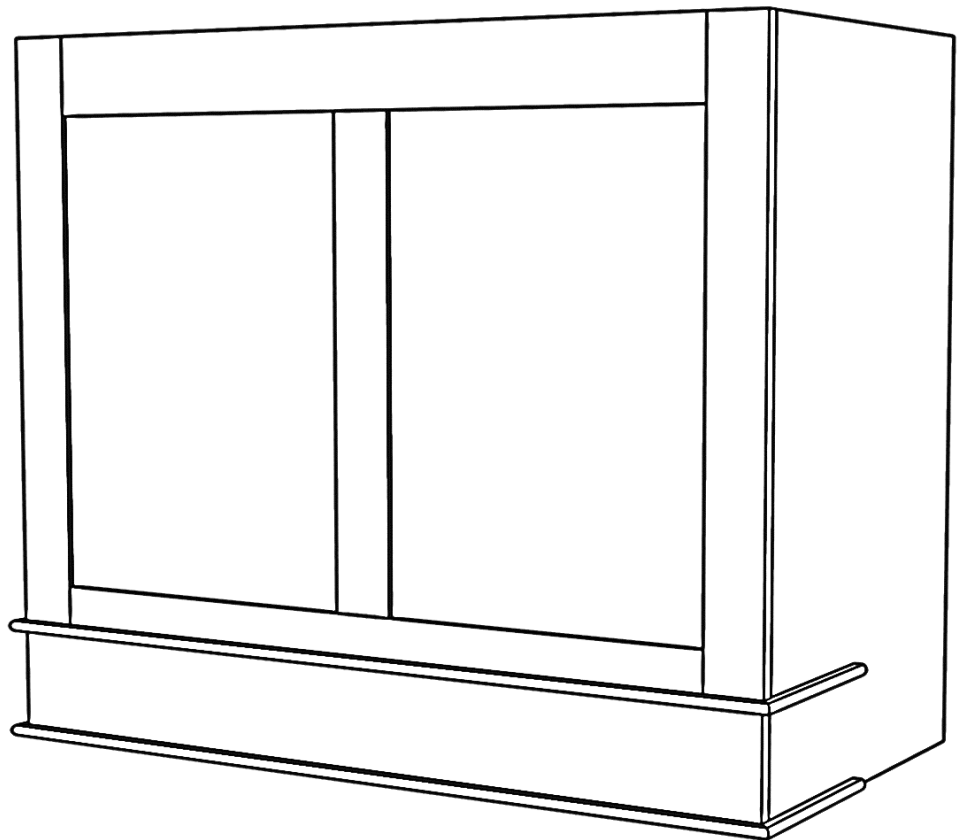
Standard Heights: 24, 30, 36, 42, 48

NEW

AVAILABLE FALL 2024

SB100

SB100 30
SB100 36
SB100 42
SB100 48*
SB100 54*
SB100 60*



* There will be three panels rather than two, due to width of hood